



Servicing the **Watch &**
Jewellery Industries



March 2017 v1.4

WATCH BAND CATALOGUE

Contents

Displays.....3
WATCH DISPLAY UNITS & CASES

Leather Straps.....4
Genuine Leather Straps, Styles & Colours

Metal Straps6
STAINLESS STEEL, GOLD PLATED & IPG STRAPS

Rubber Straps 14
POLYURETHANE RUBBER STRAPS

Nylon Straps 15
NYLON SPORT STRAPS

Pins & Lugs 16
VARIETIES OF PINS & LUGS

Watch Clasps 18
CLASP STYLES & OPTIONS

Tools 20
BAND TOOLS OF THE TRADE



SDU1
Rotating Band Display

- SRD-23 unit (right) complete with 230 straps



SRD-23
Rotating Band Display Unit

- 340 x 340 x 590mm
- 3 sides display (24 bands per side)
- 20 lockable drawers which will each display 20 bands
- Acrylic lockable shield on display sides



*Bands not included.

BRDD-2
Rotating Band Display (Mahogany)

- 290 x 290 x 550mm
- 3 sides display (12 bands per side)
- 16 lockable drawers which will each display 6 bands
- Acrylic lockable shield on display sides



BRDL-2
Rotating Band Display (Beech)

- 290 x 290 x 550mm
- 3 sides display (12 bands per side)
- 16 lockable drawers which will each display 6 bands
- Acrylic lockable shield on display sides

Imperial Calf Padded



LS7BK BLACK

8, 10, 12, 14, 16, 18, 20



LS7BR BROWN

8, 10, 12, 14, 16, 18, 20

Crystal Crocodile Grain



LS3BG BURGUNDY

8, 10, 12, 14, 16, 18, 20, 22



LS3DBL D/BLUE

8, 10, 12, 14, 16, 18, 20, 22

Imperial Calf



LS8BK BLACK

8, 10, 12, 14, 16, 18, 20



LS8BR BROWN

8, 10, 12, 14, 16, 18, 20

Aristo Reborn Leather



LS1BK BLACK

8, 10, 12, 14, 16, 18, 20



LS1BR BROWN

8, 10, 12, 14, 16, 18, 20



LS1LBR L/BROWN

8, 10, 12, 14, 16, 18, 20



LS1DBL D/BLUE

8, 10, 12, 14, 16, 18, 20

Premium Lizard Grain



LS6BK BLACK

8, 10, 12, 14, 16, 18, 20



LS6BR BROWN

8, 10, 12, 14, 16, 18, 20

All Straps:

Stitched, Anti Allergic, Reinforced Lug Ends with S/S Gold Plated or S/S C Buckle*

*Except Buffalo & Shark Grain: Heavy Duty S/S Gold Plated or S/S Buckle

Elite Crocodile Grain



LS4WH WHITE 8, 10, 12, 14, 16, 18, 20, 22



LS4BR BROWN 8, 10, 12, 14, 16, 18, 20, 22



LS4LBR L/BROWN 8, 10, 12, 14, 16, 18, 20, 22



LS4BK BLACK 8, 10, 12, 14, 16, 18, 20, 22

Buffalo Grain



LS5BG BURGUNDY 12, 14, 16, 18, 20, 22, 24



LS5BK BLACK 12, 14, 16, 18, 20, 22, 24



LS5BR BROWN 12, 14, 16, 18, 20, 22, 24

Royal Crocodile Grain

*Extra long band



LS2BKXL* BLACK 10, 12, 14, 16, 18, 20, 22, 24



LS2LBRXL* LIGHT BROWN 10, 12, 14, 16, 18, 20, 22, 24

Shark Grain



LS9BK BLACK 18, 20



LS9BL BLUE 18, 20

White Stitched



LS11MBR MEDIUM BROWN 18, 20, 22, 24



LS11DBR DARK BROWN 18, 20, 22, 24



LS11BK BLACK 18, 20, 22, 24

Watch Bands

GENTS STAINLESS STEEL RANGE

MB1SS18



Buckle Size: 16mm
End Size: 18mm

MB2SS18-24



Buckle Size: 16mm
End Size: 18-24mm

MB3SS18-24



Buckle Size: 16mm
End Size: 18-24mm

MB4SS20



Buckle Size: 18mm
End Size: 20mm

MB5SS16-22



Buckle Size: 16mm
End Size: 16-22mm

MB6SS20



Buckle Size: 16mm
End Size: 20mm

MB7SS18



Buckle Size: 16mm
End Size: 18mm

MB8SS22



Buckle Size: 18mm
End Size: 22mm

MB9SS20



Buckle Size: 18mm
End Size: 20mm

MB10SS22



Buckle Size: 20mm
End Size: 22mm

MB11SS18



Buckle Size: 16mm
End Size: 18mm

MB12SS22



Buckle Size: 20mm
End Size: 22mm

MB17SS18-22



Buckle Size: 20mm
End Size: 18-22mm

MB18SS16-22



Buckle Size: 20mm
End Size: 16-22mm

MB19SS22



Buckle Size: 20mm
End Size: 22mm

MB20SS20-24



Buckle Size: 20mm
End Size: 20-24mm



**Six pairs of band ends
in sizes: 20, 22 & 24mm**
(This includes the band ends supplied with the band.)

Watch Bands

MB20SS24



Buckle Size: 20mm
End Size: 24mm

MB22SS

Available in Sizes: 18, 20 & 22mm



Buckle Size: 18mm
End Size: 18, 20 & 22mm

MB23SS

Available in Sizes: 20 & 22mm



Buckle Size: 20mm
End Size: 20 & 22mm

MB24SS

Available in Sizes: 18 & 20mm



Buckle Size: 18mm
End Size: 18 & 20mm

MB25SS

Available in Sizes: 24 & 26mm



Buckle Size: 20mm
End Size: 24 & 26mm

LADIES STAINLESS STEEL RANGE

MB13SS14



Buckle Size: 10mm
End Size: 14mm

MB14SS12



Buckle Size: 11mm
End Size: 12mm

MB16SS

Available in Sizes: 10 & 12mm



Buckle Size: 5mm
End Size: 10 & 12mm

MB21SS12-14



Buckle Size: 12mm
End Size: 12-14mm

GENTS GOLD PLATED RANGE

MB1AG18



Buckle Size: 16mm
End Size: 18mm

MB2AG18-24



Buckle Size: 16mm
End Size: 18-24mm

MB3AG18-24



Buckle Size: 16mm
End Size: 18-24mm

LADIES GOLD PLATED RANGE

MB13AG14



Buckle Size: 10mm
End Size: 14mm

MB14AG12



Buckle Size: 11mm
End Size: 12mm

GENTS IONIC PLATED GOLD RANGE

MB1PG18



Buckle Size: 16mm
End Size: 18mm

MB17PG18-22



Buckle Size: 16mm
End Size: 18-22mm

MB18PG16-22



Buckle Size: 18mm
End Size: 16-22mm

Watch Bands

MB23PG

Available in Sizes: 20 & 22mm



Buckle Size: 18mm
End Size: 20 & 22mm

MB24PG

Available in Sizes: 18 & 20mm



Buckle Size: 18mm
End Size: 18 & 20mm

LADIES IONIC PLATED GOLD RANGE

MB15PG12



Buckle Size: 8mm
End Size: 14mm

MB16PG10

Available in Sizes: 10 & 12mm



Buckle Size: 5mm
End Size: 10 & 12mm

MB21PG12-14



Buckle Size: 12mm
End Size: 12-14mm

GENTS TWO TONE RANGE (With Ionic Gold Plating)

MB1TT18



Buckle Size: 16mm
End Size: 18mm

MB2TT18-24



Buckle Size: 16mm
End Size: 18-24mm

MB17TT18-22



Buckle Size: 16mm
End Size: 18-22mm

MB18TT16-22



Buckle Size: 20mm
End Size: 16-22mm

MB20TT20-24



Buckle Size: 20mm
End Size: 20-24mm



Six pairs of band ends in sizes: 20, 22 & 24mm
(This includes the band ends supplied with the band.)

MB23TT

Available in Sizes: 20 & 22mm



Buckle Size: 18mm
End Size: 20mm

MB24TT

Available in Sizes: 18 & 20mm



Buckle Size: 18mm
End Size: 18mm

LADIES TWO TONE RANGE

MB13TT14 (Gold Plated)



Buckle Size: 10mm
End Size: 14mm

MB16TT10 (Ionic Gold Plated)

Available in Sizes: 10 & 12mm



Buckle Size: 5mm
End Size: 10 & 12mm

MB21TT12-14 (Ionic Gold Plated)



Buckle Size: 10mm
End Size: 12-14mm

Watch Bands

STAINLESS STEEL EXPANDING BAND RANGE

EB1SS17-23



Body Size: 17mm
End Size: 17-22mm

EB2SS17-23



Body Size: 17mm
End Size: 17-22mm

EB3SS17-23



Body Size: 17mm
End Size: 17-22mm

EB4SS14-18



Body Size: 14mm
End Size: 14-18mm

EB5SS10-14



Body Size: 10mm
End Size: 10-14mm

EB6SS10-14



Body Size: 10mm
End Size: 10-14mm

EB7SS11-16



Body Size: 11mm
End Size: 11-16mm

EB8SS17-23



Body Size: 17mm
End Size: 17-23mm

EB9SS20-26



Body Size: 20mm
End Size: 20-26mm

EB10SS17-23



Body Size: 17mm
End Size: 17-23mm

GOLD PLATED EXPANDING BAND RANGE

EB1AG17-23



Body Size: 17mm
End Size: 17-22mm

EB3AG17-23



Body Size: 17mm
End Size: 17-22mm

EB4AG14-18



Body Size: 14mm
End Size: 14-18mm

EB5AG10-14



Body Size: 10mm
End Size: 10-14mm

EB6AG10-14



Body Size: 10mm
End Size: 10-14mm

EB7AG11-16



Body Size: 11mm
End Size: 11-16mm

EB8AG17-23



Body Size: 17mm
End Size: 17-23mm

EB9AG20-26



Body Size: 20mm
End Size: 20-26mm

EB10AG17-23



Body Size: 17mm
End Size: 17-23mm

TWO TONE EXPANDING BAND RANGE (Stainless Steel With Gold Plating)

EB1TT17-23



Body Size: 17mm
End Size: 17-22mm

Watch Bands

EB7TT11-16



Body Size: 11mm
End Size: 11-16mm

EB8TT17-23



Body Size: 17mm
End Size: 17-23mm

EB9TT20-26



Body Size: 20mm
End Size: 20-26mm

RUBBER BAND RANGE

RS1BK



Sizes Available: 18mm

RS2BK



Sizes Available: 18mm

RS3BK



Sizes Available: 20, 22mm

RS4BK



Sizes Available: 20, 22, 24mm

RS5BK



Sizes Available: 22, 24mm

RS6BK22A



Sizes Available: 22mm

RS6BK22B



Sizes Available: 22mm

NYLON BAND RANGE

NS1DBL (BLUE)



Sizes Available: 20mm

NS1GR (GREEN)



Sizes Available: 20mm

NS2BK



Sizes Available: 12, 18, 20mm

NS3BK



Sizes Available: 18, 20, 22mm

Replacement Pins

S/S Pins with Tubes



636PWT-1.0

1.0mm Thick.
Sizes 10, 12-14, 16-22, 24mm.
5 Each of 12 Sizes.

S/S Pins with Tubes



636PWT-1.2

1.2mm Thick.
Sizes 10-22mm.
5 Each of 13 Sizes.

Big Head S/S Pins With Tubes



636BH-1.2/1.8

1.2mm Thick /w 1.8mm Head.
Sizes 10, 12-14, 16-22, 24mm.
5 each of 12 Sizes.

S/S Split Pins Open End Pins



6170EP10/1.0 X18

Available in 5 different Kits.
0.8mm Thick.
10 Each of 18 Sizes.
0.9, 1.0, 1.1, 1.2mm Thick.
10 Each x 18 Sizes per Kit.

S/S Screw Pins for RLX Bands



658

5 each of 18 Sizes.

Extra Long T-Bar



6013

1.5mm Thick. Sizes 22, 24,
26, 28, 30, 32, 34, 36mm.
10 each of 8 Sizes per Kit.

Knurled S/S Pins



637KSP 1.0

Available in 3 different Kits.
0.9, 1.0, 1.2mm Thick.
10 pieces in each size.

S/S Pins with Tubes



6006

Assorted Kit.
Total of 70 pieces.
35 Pins & 35 Tubes.

S/S Notched Tube with Pins



638NTP

5 Each of 12 Sizes.
0.9mm - 1.2mm Thick.

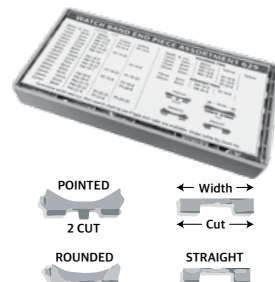
T-Bars



606ATB10

G/P Sizes 10 to 20mm.
S/S Sizes 12 to 20mm.
1.30mm Thick.
ASS of G/P & S/S.

Metal Band End Kit



629

2 Each of 36 Sizes.
ASS G/P, S/S & T/T.

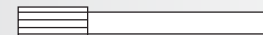
S/S Straight Pins



SSP10

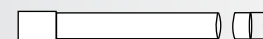
10 Each of 10 Sizes.
0.8 to 1.8mm, 30mm Length.

KIT REFILLS



637KSP 1.0

S/S Knurled Pins. Packs of 10.
Sizes 10 to 21mm, 1.0mm Thick.



638NTP

S/S Notched Tube With Pin. Packs of 5.
Sizes 10 to 21mm.



606ATB10

T-Bar, Packs of 10. G/P Lengths 10 to 20mm
Steel Lengths 12 to 20mm.



6013

Special Extra Long T-Bar Dia: 1.5mm. Packs of 10.
Sizes 22 to 36mm.



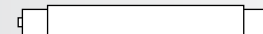
6170EP

Open End Pins. Packs of 20. Sizes 4 to 30mm
Available in 5 Different Thicknesses.



SDB150, 178

Short Tip Lugs with No Shoulder
Packs of 20 & 50.
Sizes 11, 13, 15, 17, 18, 19, 21mm in 1.5 & 1.78mm Thick.



SDS250

S/S Double Shoulder, Packs of 20 & 50.
Sizes 19 to 22mm, 2.5mm Thick.



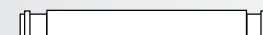
SDSU130, 150, 178

S/S Double Shoulder Universal Lugs.
Packs of 20 & 50. Sizes 9-12, 12-16, 14-18,
16-21, 18-24, 25-30, 28-34 & 35-40mm in 1.3, 1.5 &
1.78mm Thick.



SDF100, 130, 150, 178

S/S Double Flange. Packs of 20 & 50.
Sizes 6 to 40mm in 1.0, 1.3, 1.5 & 1.78mm Thick.



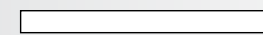
SSB130, 150

S/S Single Flange Short Tips for Clasp.
Packs of 20 & 50. Sizes 6 to 22mm.
1.3mm, 1.5mm Thick.



SSS150, 178

S/S Suicide Lugs. Packs of 20 & 50.
Sizes 12 to 25mm. 1.5mm, 1.78mm Thick



618 SSP

Solid S/S Pins. Packs of 10. Sizes 12 to 20mm.

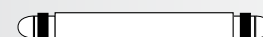


636PWT

Pins With Tubes. Packs of 5.
Sizes 10 to 25mm, 1.0 & 1.2mm Thick.

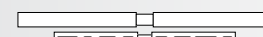
636BH

Big Head Pins With Tubes. Sizes 10, 12-14, 16-22,
24mm. 1.2mm Thick with 1.8mm Head.



683-B

Balled Tip Spring Lugs. Packs of 20.
Sizes 8 to 22mm.



6006

S/S Pins With Tubes. Packs of 5. Tube: 1.8mm.
Sizes 0.7 to 1.8mm.

Double Flange Lugs



S/S Spring Bar Assortment



CB01

Contents

30 Boxes (50 per box) of:

SDF178

..... 8, 10, 12, 14, 16, 18, 20, 22, 24mm

SDF150

..... 8, 10, 12, 14, 16, 18, 20, 22, 24mm

SSB130

..... 8, 10, 12, 14, 16, 18, 20, 22mm

SDSU178

..... 14-18mm, 16-21mm, 18-24mm

S/S Band Lug SDF-100



605ASS20/1.0

20 each of 12 Sizes.
Sizes 6 to 22mm.

S/S Band Lug SDF-130 SDF-150, SDF-178



605ASS20

3 Different Kits, 1.3, 1.5, 1.78mm.
20 each of 18 Sizes.
Sizes 7 to 24mm.

Brass Double Flange Band Lugs



605ASB20/1.3

20 Each of 18 Sizes.
Sizes 6 to 22mm.

S/S Band Lugs SDF-150, 400 piece Kit



PB20A/150

20 each of 17 Sizes.
40 each of 12, 16 & 18mm.
Sizes 8 to 24mm.

S/S Band Lugs SDF-150, 900 piece Kit



605ASS50/1.50

50 each of 18 Sizes.
Sizes 6 to 22mm.

XL Double Flange S/S Spring Bar Kit



SDF1780S20/1.78

20 Each of 10 Sizes.
Sizes 28, 29, 30, 31, 32, 34, 36,
37, 38 & 40mm.

Short bead S/S Clasp Lugs SSB-130



SSB130ASS20/1.30A

20 Each of 15 Sizes.
Sizes 6 to 20mm.

Short bead S/S Clasp Lugs SSB-150



605SSB150

20 Each of 15 Sizes.
Sizes 8 to 22mm.

Ball End Spring Bar Kit



T-683

20 Each of 15 Sizes.
Sizes 8 to 22mm.

RLX Style Lug



657

10 Each of 9 Sizes.
Assorted Sizes.

Steel Wire



515

Brass Bushing Wire



514

Set of 23.

Assorted Tapered Steel Pins



950240

Set of 100.

Assorted Tapered Brass Pins

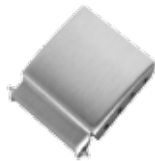


950230

Set of 100.

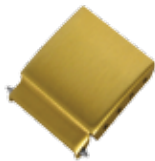
Clasps & Buckles

CLASP EXTENSIONS



CX S/S

12, 14, 16, 18, 19, 20, 22mm



CX G/P

12, 14, 16, 18, 19, 20, 22mm

S/S C BUCKLE FOR STRAPS



BC S

6 to 18mm



BC G

8 to 18mm

HEAVY DUTY



BH S

16 to 18mm



BH G

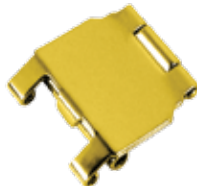
16 to 18mm

CLASP EXTENDER



C643S

12/7, 14/7, 16/8, 16/9, 18/8, 18/9, 18/10, 20/10, 20/12mm



C643G

12/7, 14/7, 16/8, 16/9, 18/8, 18/9, 18/10, 20/10, 20/12mm

S/S SINGLE SLOT



C6003

Stainless steel
1.5, 2.0, 2.5, 3.0, 4.0, 5.0mm

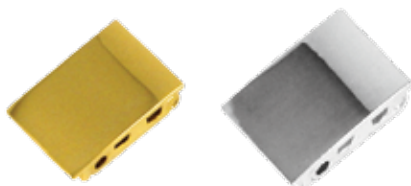
S/S DOUBLE SLOT



C6007

Stainless steel
1.5, 2.0, 2.5, 3.0, 4.0, 5.0mm

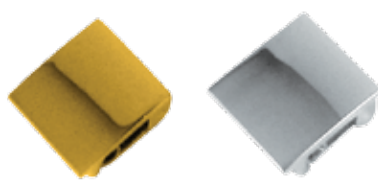
DOUBLE SLOT V CLASP



C621D in A/G or PNP

2.2, 3, 4, 5, 6, 7, 8, 9, 10, 11, 12, 13, 14, 15, 16mm

SINGLE SLOT V CLASP



C621S in A/G or PNP

2.2, 3, 4, 5, 6, 7, 8, 9, 10, 11, 12, 13, 14, 15, 16mm

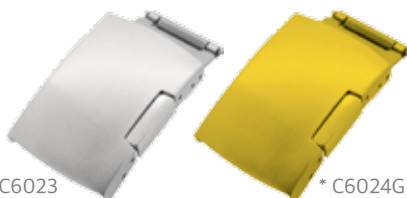
SINGLE SLOT BUCKLE EXTENDER



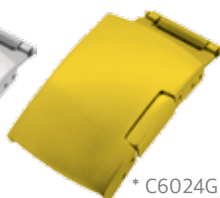
C114 in A/G or PNP

2.8, 3.8, 4.8, 5.8, 6.8, 7.8, 8.8, 9.8, 10.8, 11.8, 12.8, 13.8, 14.8, 15.8mm

SINGLE PUSH CLASP FOR LEATHER STRAPS & METAL BANDS



* C6023
* C6024



* C6024G

C6023 Leather Strap Kit

Sizes: 18/18mm, 20/20mm, 22/22mm, 24/24mm

C6024 Metal Band Kit

Sizes: 12/7mm, 14/7mm, 16/9mm, 18/9mm, 20/10mm, 22/10mm, 24/22mm

C6024G Gold Plated Metal Band Kit

Sizes: 12/7mm, 14/8mm, 16/9mm, 18/10mm, 20/10mm, 22/10mm

DOUBLE SIDE CLICK S/S FOLD OVER CLASP



C651

10, 12, 14, 16, 18, 20, 22mm

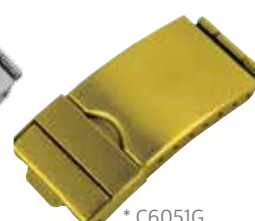
C651G

10, 12, 14, 16, 18, 20, 22mm

3 FOLD S/S CLASP /w SAFETY



* C644



* C6051G

C644 3 Fold Clasp /w Safety Kit

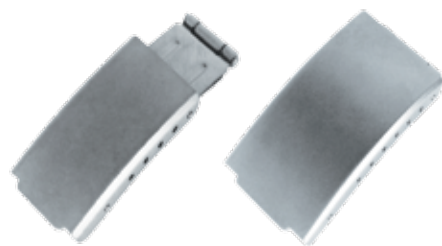
Sizes: 10/6, 12/7, 14/7, 16/8, 16/10, 18/8, 18/10, 20/10, 20/12mm

C6051G Gold Plated 3 Fold Clasp /w Safety Kit*

Sizes: 12x7mm, 14x7mm, 16x9mm, 18x9mm, 20x10mm, 22x10mm, 24x22mm

*Kit only. Individual sizes not available.

TITANIUM 3 FOLD CLASP



C680L

10/5, 12/7, 14/7mm

C680M

16/9, 18/9, 20/10mm

TITANIUM 3 FOLD CLASP /w SAFETY



C681L

10/5, 12/7, 14/7mm

C681M

16/9, 18/9, 20/10mm

SEIKO STYLE CLASP /w SAFETY CHAIN*

*Also Available in G/P



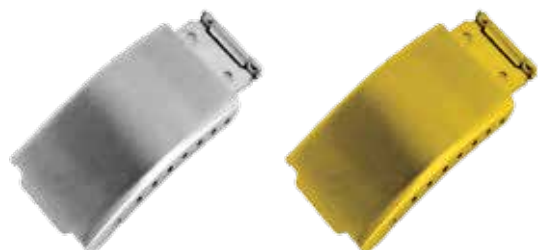
CSK

6, 7, 8, 9, 10,
15, 16mm

C642SC/G

Safety Chain
in Packs of 5

3 FOLD S/S CLASP /wout SAFETY



C644NS

10/6mm, 12/7mm,
14/7mm, 16/10mm,
16/8mm, 18/10mm,
18/8mm, 20/10mm,
20/12mm

C644NSG

12/7mm, 16/10mm, 18/10mm

3 FOLD S/S CITIZEN STYLE CLASP /wout SAFETY



C644VM

10/10, 12/12, 14/14, 16/16, 20/20mm
18/18 discontinued, use C662 or C6023

DOUBLE SIDE SWITCH 3 FOLD CLASP /w SAFETY



C662

12/12, 14/14, 16/16, 18/18, 20/20, 22/22mm

SOLID S/S BUTTERFLY BUCKLE TWO SIDES SWITCH



C6002L

L-10#

36X13X8.2X4.2

L-12#

36X15X8.2X4.2

L-12#

36X15X8.2X5.0

L-15#

36X18X8.2X4.2



C649TS

AG-6X12X40

AL-5X9X35

BG-7X11X39

BL-4X8X35



C6002M

M-18#

41.5X21X11.2X6.0

M-20#

41.5X23X11.2X6.0

M-22#

41.5X25X11.2X6.0

M-24#

41.5X27X11.2X6.0

SOLID S/S CLASP



MSA 51.006-B

9X6mm

MSA 51.006-10

10X6mm

SOLID S/S BUTTERFLY BUCKLES



C649*

O-3.5X8.5X36mm

O-4.0X1.0X39mm

O-4.0X1.0X34mm

O-5.9X10.5X40mm

O-4.5X8.5X36mm

O-2.5X5.5X35mm

O-5.5X10.5X40mm

O-5X9X36mm

*Range also available in kit **C6025**



C649

I-4.0X10X34mm

I-4.0X10X39mm



C669

DL5A-5X8X35

DL5B-6X10X35

G30-6X11X39

L30-6X9X39

G24-4X10.5X39



C6025

*2.5x6x35mm

3x5.5x35mm

3.5x6x35mm

4x8x36mm

*4.5x8.5x36mm

5x8.5x36mm

5.7x10x40mm

*5.9x11x40mm

*Also available individuals **C649**

PIG STABBER



BAND END & LINK PLIERS



SCREW TYPE BAND PIN REMOVER



BRASS BRACELET FILLING BLOCK



PUNCH SET

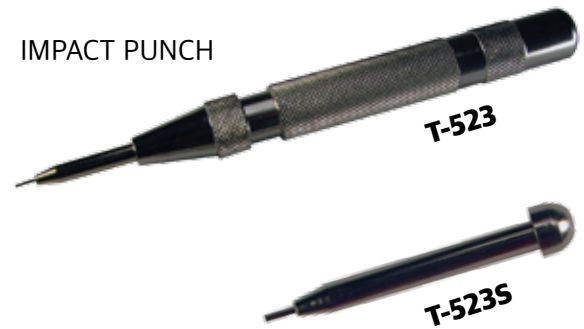


PIN PUNCH PLIERS



Replacement Tips, T-984-A0.8, T-984-A1.0

IMPACT PUNCH



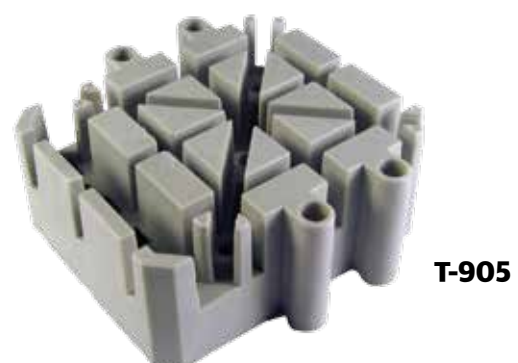
LUG TOOLS



HAMMER 80MM



BAND BLOCK



Tools

ANVIL



T-003

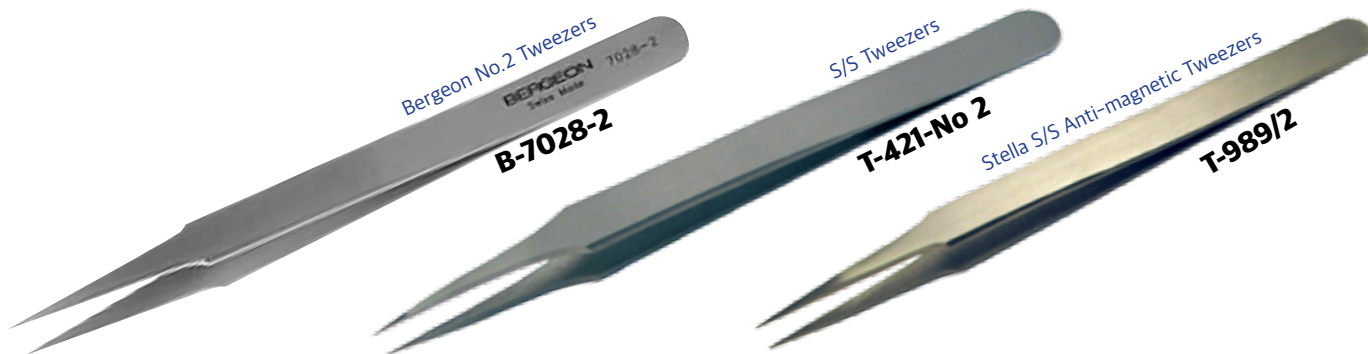
SCREW DRIVER SET



T-206ELG

T-205R
Replacement Blades
Available in Sizes
0.5, 0.6, 0.8, 1.0, 1.2,
1.4, 1.6, 2.0, 2.5

TWEEZERS



HOROTEC BRACELET PRESS



MSA 10.499

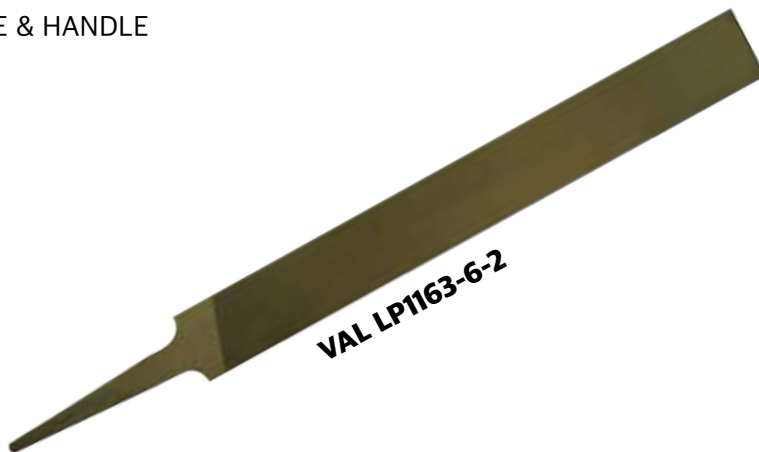
UNIVERSAL TOOL FOR
PRESSING BRACELETS



T-969

PUNCH TOOLS

FILE & HANDLE



Medium Smooth File



T-718

File Handle

CASE KNIFE



Horotec Swiss Case Knife



Horotec Swiss Case Knife



END CUTTERS



T-1232

High Quality End Cutters



T-L300A

SIDE CUTTERS



T-L298A

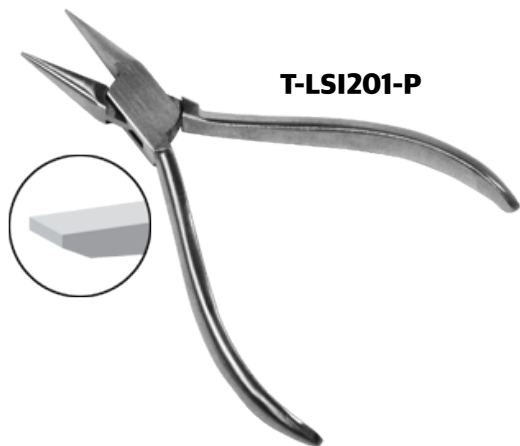


T-L150

Tungsten Carbide Tips

Pliers

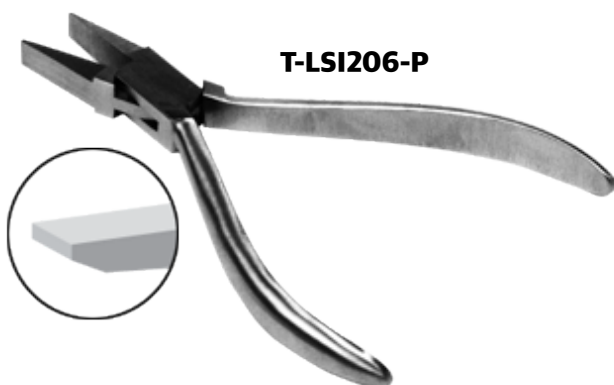
CHAIN NOSE PLIERS 128 MM



CHAIN NOSE PLIERS (SERRATED) 128 MM



FLAT NOSE PLIERS 128 MM



FLAT NOSE PLIERS (SERRATED) 128 MM



FLAT NOSE PLIERS 115 MM



CHAIN NOSE PLIERS 115MM



STRAP NOTCHING PLIERS

*Available in 1mm or 3mm Cut



HOLE PUNCH PLIERS



HOLE PUNCH PLIERS



LINK REMOVING PLIERS



SPRING BAR CURVER



Tools

HOLE PUNCH
*With 6 Different Tip Sizes



T-434

HOROTEC MULTI PRESS FOR
BRACELET



MSA 10.500

TABLE VICE



T-458

HOROTEC



MSA 00.009
Available In Sizes, 1.5, 2.5, 3.5

MINI 100MM DIGITAL VERNIER CALLIPERS



MSA 15.501

PIN VICES



T-328

0 - 0.25mm



T-334

Made from steel with a knurled handle.
Size: 0 to 1.25



T-335

Pin Vice with extra collet, 10cm.
Size: 0 to 1.3 & 1.3 to 2.3



T-LS1446

2 x reversible collets.
Size: 0 to 3.0mm & 1.6 to 2.5mm

By placing an order with Labanda, you are accepting our terms and conditions and Labanda will not be held liable if the customer does not understand these terms and conditions. Please contact Labanda if you need help with any of the terms and conditions stated.

GUARANTEES AND WARRANTIES

Products supplied by Labanda to customers are covered by their respective manufacturer's warranty. If there is a fault with your product within the warranty period please contact Labanda and specify the problem. Any claim must be made to Labanda within 3 days of invoice. Labanda will repair, refund or replace any product that proves within the guarantee period to be faulty. However if Labanda suspects the product to be faulty due to misuse, willful damage, negligence, failure to follow instructions, lack of technical understanding, alteration or fair wear and tear, Labanda reserves the right to send the product back to the customer and re-invoice. Labanda is not under any liability regarding guarantees or warranties if any payment for the product is over due.

OWNERSHIP AND RISK

Customers should be advised that orders will be dispatched via their chosen postage method stated in the payment conditions (Below). Labanda will not be held liable for any problems that may arise during the delivery stage of your order. Labanda remains the owner of any goods ordered until Labanda has been paid in full. Please read the Shipping section of terms and conditions for postage costs and methods.

PAYMENT CONDITIONS

Customers who already have an existing account with Labanda may charge orders direct to their account. If you do not have an account you can pay using PayPal. We offer a PayPal payment solution for the enhanced security features protecting your personal information by means of SSL Security and 128bit data encryption. PayPal also offers insurance of up to \$3000/transaction. PayPal accepts Visa and MasterCard, however should you already have a PayPal account then other payment options are available. All goods will remain the property of Labanda until the payment has been made in full.

OPENING ORDERS

An opening order can initially be paid for by business cheque, Mastercard or Visa ; with the minimum spend of \$20.00. An account application form can be obtained by contacting customer service or the company representative. Account terms are strictly 30 days.

PRICES

All prices given or provided by Labanda are subject to change at any time without notice. The customer should in all cases confirm the price at the time of order. Customers should be advised that all prices do not include GST.

RETURNS

We take great care to send you new products in excellent condition. If you're not satisfied, please return the entire item in original condition, we'll gladly accept returns on purchases provided the product is returned in new condition and isn't damaged. Please return in original packaging and within 10 days of invoice date. When returning items to us please ensure the goods are carefully stored in a sturdy package. Please supply the original invoice number and date, also the reason for the return and a description of the problem with the item. Any further Warranty issues are between you and your customer. Please Note: since manufacturers do not warranty movements for repair purposes, please inspect your movement upon receipt and before installation.

SHIPPING

Shipping and methods of dispatch of all orders will be at Labanda's discretion unless specified by the customer at the point of order. Prices for orders can change depending on the weight of the order and the time required for delivery. Labanda shall not be liable for any losses, costs, damages or lateness of order. Any quoted delivery date should be treated as an estimate and the order may be delivered before or after any quoted date.

LABANDA SHIPPING PRICES AS FOLLOWS:

Express eParcel (500g Satchel)	\$12.50
eParcel (500g Satchel)	\$10.00
Fastways (Brisbane Metro Area).....	\$9.00
International Airmail (No Tracking).....	\$15.00*
International Registered (Pack N Track).....	\$30.00*
Toll Priority (1Kg Satchel)	\$11.50
Toll Priority (3Kg Satchel)	\$16.50
Toll Priority (5Kg Satchel).....	\$22.50

Additional charges

Box (optional, at customer request).....	\$1.50
Pick Up is also available free of charge	

REPAIRS

Labanda takes all due care and attention in watch and clock repairs and in the cutting of glass for watch cases. Labanda has a 6 month guarantee against fault in workmanship on all repairs. While this guarantee includes parts we replace it does not include parts we do not replace. While Labanda makes all reasonable efforts to secure and protect customers' property while on our premises, it is the responsibility of the customer to insure their items against all possible events such as theft or damage. Any item in transit is the responsibility of the customer regardless of the method of transport employed.

* Actual price is dependant on weight and is subject to change.



WATCH BAND CATALOGUE

March 2017 v1.4

Unit 2, 31 Black Street, MILTON QLD 4064

Tel: (07) 3876 7481 Fax: (07) 3368 3100 Adelaide: (08) 7221 2202 Melbourne: (03) 9038 8545
Perth: (08) 6363 5517 Sydney: (02) 8004 1626 Web: www.labanda.com.au Email: sales@labanda.com.au